

# WHAT IS THE COMBINED FEDERAL CAMPAIGN

A quick guide to understanding the CFC

The CFC is the world's **largest** and most **successful** annual workplace campaign, raising millions of dollars each year. Pledges made by Federal civilian, postal and military donors during the campaign season support eligible organizations that provide health and human service benefits throughout the world.

## MISSION OF THE CFC



Promote and support charitable giving



Over 8,000 participating non-profits



Be employee focused, cost-efficient, and effective



400,000 employees give



Improve quality of life in the U.S. and abroad

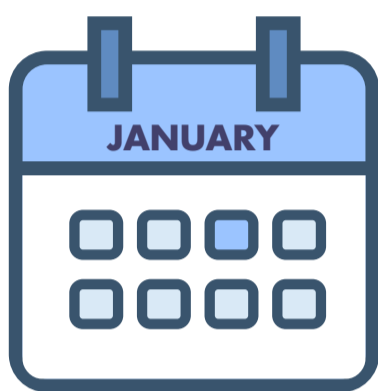


Since 1961, more than \$8 billion raised

## CAMPAIGN PERIOD



TO



During this period, federal workers, retirees, and government contractors are eligible to donate to the CFC.

## THE PLEDGING PROCESS



Federal workers, retirees and government contractors are invited to donate to the CFC.



The charity search function on the CFC Donor Portal helps employees find the right charity.

Donors can search for a specific charity or for a cause that interest them.

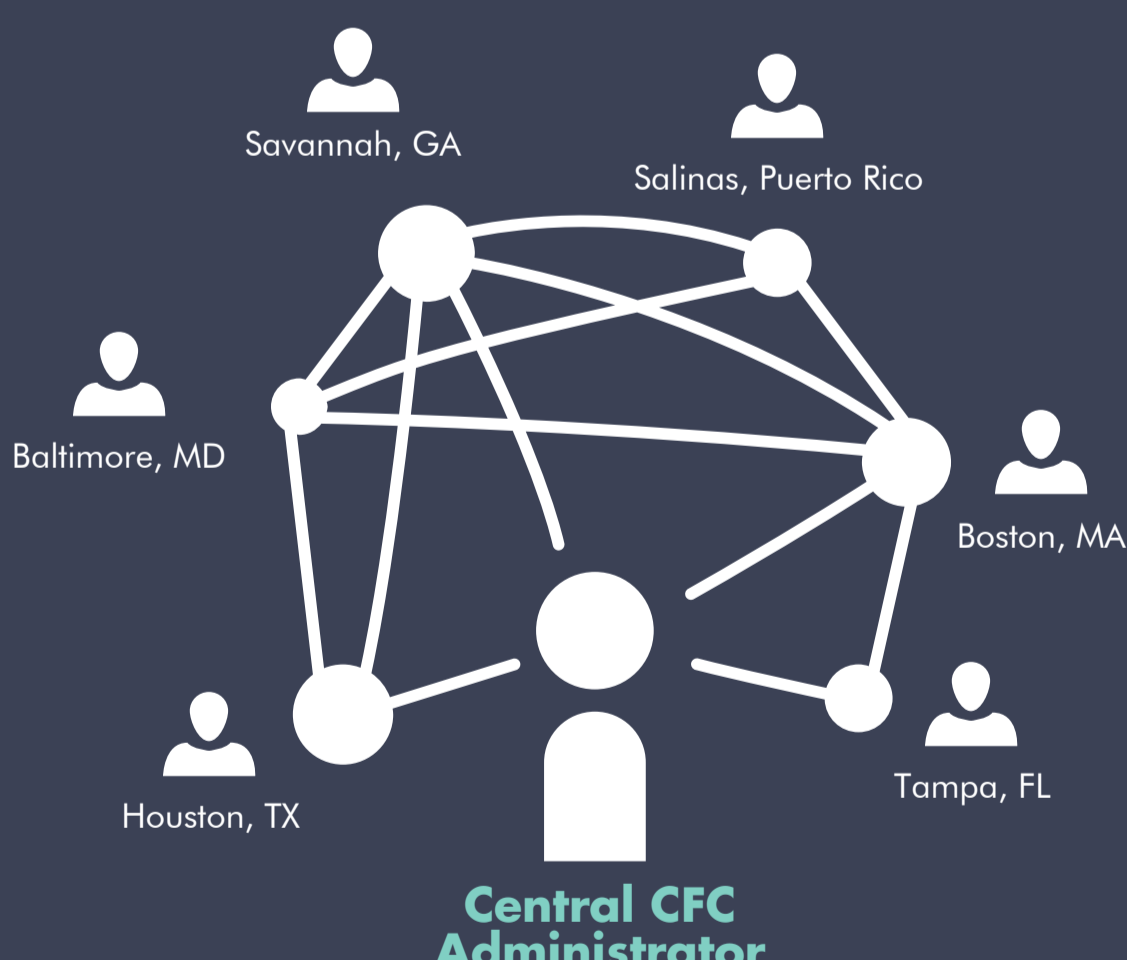


Donors can pledge online or fill out a paper form.



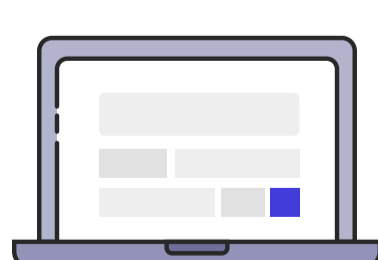
## COLLECTION OF PLEDGES

Pledging takes place throughout the country and overseas. Pledges can be recurring or one-time donations. Donors can contribute through the CFC by payroll deduction, credit card, debit card or eCheck.



The Central Administrator collects all the pledge information and consolidates it for each participating organization.

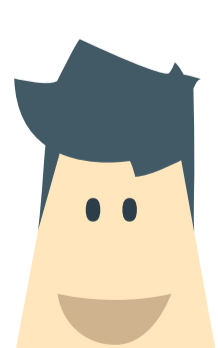
## DISTRIBUTION OF PLEDGES



Pledges are consolidated for each participating organization



Money is deducted from donors' paychecks



Money is distributed to participating non-profit.

Charities truly **love** the CFC. As the only authorized charitable solicitation of employees in the Federal workplace, the CFC is a critical source of unrestricted funds and an inexpensive way to attract new donors.